

 WESTIN®



W | 6 SEG | MSG | HSG

INTRODUCTION

Congratulations on the purchase of your new Westin baitcasting reel. Designed by anglers for anglers, this low profile baitcaster utilises a blend of proven and state-of-the-art technology to provide smooth, efficient, and reliable performance. Each Westin reel is constructed to last with high quality components designed to give years of service.

Features and benefits found on the Westin reel are highlighted on the box and in detail on the website. The entire company would like to thank you for selecting a Westin reel as your reel of choice. We are confident that your reel will perform for many years.

WARRANTY

As we are confident about the quality of the Westin reels, they are covered by a limited warranty against defects in workmanship and materials for a period of up to 5-years, dependent upon the specific model purchased and the warranty period provided with it. Should damage occur due to a manufacturer's defect, Westin will, at the company's discretion, replace the product at no charge. This warranty is only valid to the original owner and does not extend to products purchased for commercial or rental applications. To determine the correct warranty period, the receipt needs to be handed over when a claim occurs. The Westin reels are developed for usage in freshwater and therefore not suitable for saltwater usage.

CARE AND LUBRICATION

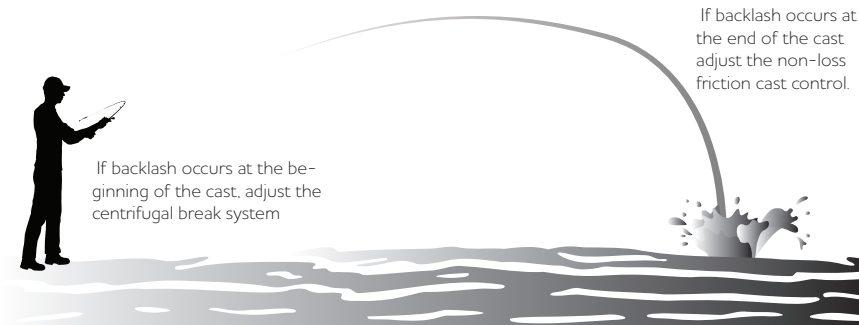
Your Westin reel is quality manufactured for maximum durability. Like any other precision-made piece of equipment, reasonable care will ensure peak performance and longevity.

After each fishing trip, the reel should be cleaned with a soap solution and fresh water, preferably warm, to remove any accumulated salt and mineral deposits.

Do not wash the reel with water under pressure as this will force salt deposits and/or sand into the reel. A very fine spray will help dissolve the salt on the external parts of the reel and rinse it clean.

Dry excess moisture from the reel and then sparingly lubricate all exposed areas. Your reel should be stored in a cool, dry place. Do not store in a plastic bag, as condensation may develop.

Periodically examine your reel and tighten loose screws and fittings. Depending upon use, your reel should be overhauled at least once every season.



If backlash occurs at the beginning of the cast, adjust the centrifugal break system

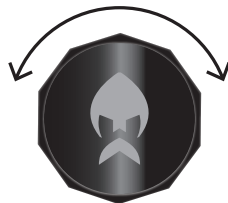
If backlash occurs at the end of the cast adjust the non-loss friction cast control

CASTING TIPS

Gaining control over spool overruns, or 'backlashes' is quite easy (see diagram below). Overruns occurring near the beginning of the cast are best controlled with the Westin centrifugal brake. Overruns occurring at the end of the cast are best controlled with the non-loss friction cast control.

NON-LOSS FRICTION CAST CONTROL

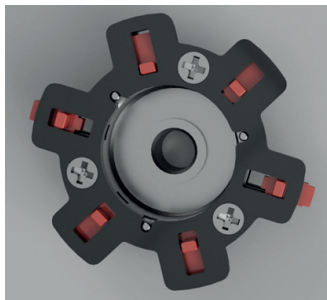
The cast control knob is used to add the proper amount of friction to the spool. Too much friction shortens the casting distance, too little leaves overrun and 'backlash' unchecked. Turn the cast control knob clockwise to increase friction, counter-clockwise to decrease friction. The proper setting will vary with lure type, lure weight, and line diameter.



6-CENTRIFUGAL BRAKE SYSTEM

The Westin centrifugal brake system uses six small weights located on the palming side of the reel. The casting characteristics of the reel are easily modified by switching all or combinations of the six brake weights "on" or "off".

To access the brake weights on your reel use the switch underneath the palming sideplate, for more information read 'how to release the sideplate'. To turn a weight 'on' simply push it out (toward the outer spool edge) past the inner retaining clips. To turn a weight 'off' push the weight inward past the clips.



HOW TO RELEASE THE SIDEPLATE

While pressing the push button underneath, slide the sideplate in an upward direction to open.



Fairpoint Outdoors A/S,
Gydevang 4
3450 Allerød,
Denmark